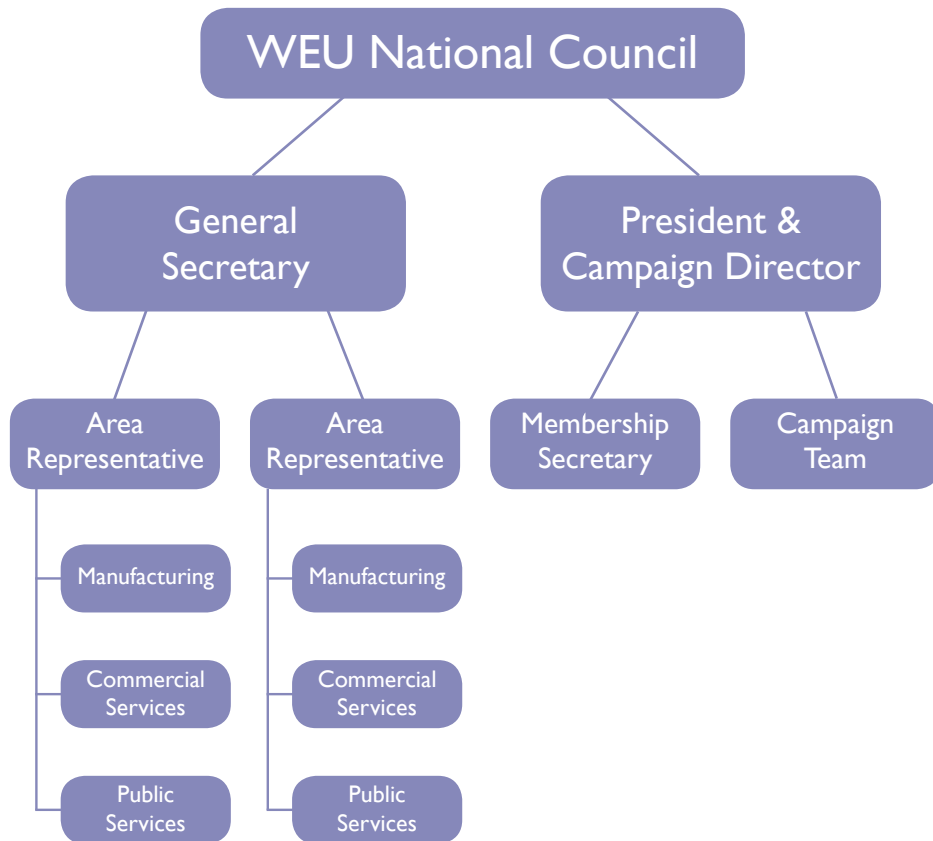


Structure of the Union



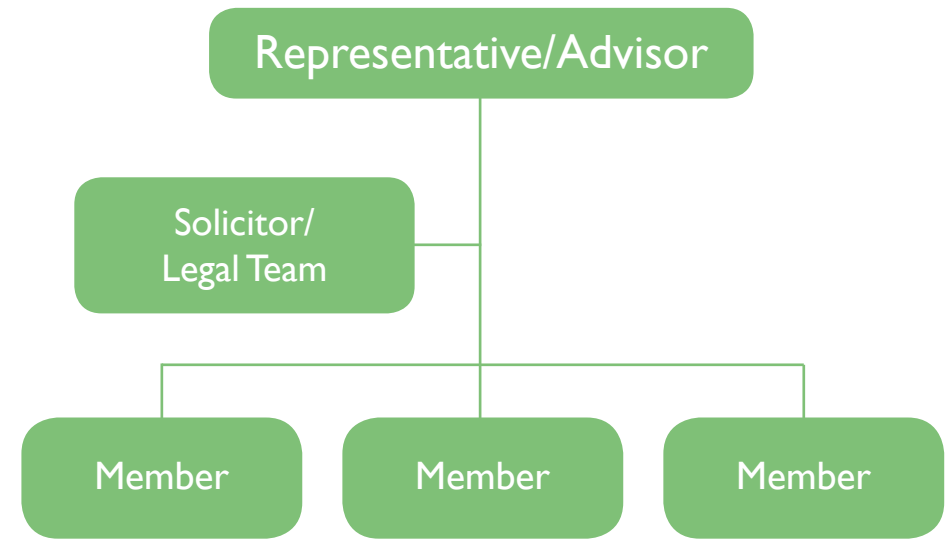
The Executive Council

The Workers of England Union executive councils governing body meets every two months to discuss amendments and changes to The Workers of England Union rules and purpose.

It consists of elected active members of the union and it is chaired by The Workers of England Union's General Secretary. These members oversee the practical business of running the union. There is also an annual national meeting where members can raise points and policies. These points will then be carried for further discussion at the Executive Council. Our Campaigns will highlight the injustices that the people of England experience.

The main structural areas of responsibility are as follows:

- Finance - Accountant
- General purpose and organisational
- Campaigns
- Membership
- Branches – county responsibility
- Legal – Solicitor / Barrister



Membership is divided into sectors and we have significant membership growth in the following areas:

- Drivers
- Retail
- Security
- Health care
- Office

As the WEU grows these will be placed under categories such as:

- Manufacturing
- Commercial services
- Public services

The Workers of England Union believes and accepts that each section has a unique set of problems and issues. Every year across the country a number of different conferences are held by these industries and this gives The Workers of England Union an opportunity to gauge the areas that require more focus.

By keeping up with each evolving industry, The Workers of England Union is able to respond in a forward looking manner. Involvement in each industry will help The Workers of England Union to influence representations that are positive to both the member and the overall employee group. Also this helps The Workers of England Union understand industry related problems which is helpful as it strives to protect our members to achieve long term goals.

If, as a member you become aware of any changes to your industry please inform the office on 01206 677899 or contact the website: www.workersofengland.co.uk